

## Easy Read Eligibility



Access 2 Place wrote this information. When you see the words '**we**' or '**us**' or '**A2P**' it means Access 2 Place.

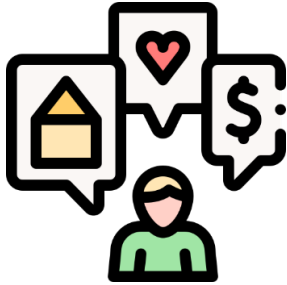


We have written this document in an easy to read way. It has key details from our Eligibility Policy.



You can read this document with your family or a support person. We use pictures to help explain ideas.

## What is Eligibility?



Being **eligible** means there are certain things about a person and their life which mean they may be allowed to move into an A2P home.



At A2P we can only offer homes to people who are eligible for our housing. This document talks about how to be eligible for housing with A2P.



When a person is offered an A2P home, this is called an **allocation**.



We have an Easy Read Allocations document which talks about how we choose a person to move into an A2P home. You can see it on our website:

<https://access2place.com.au/tenants/tenant-policies/>.

## What is Community Housing?



A2P is a **Community Housing Provider (or CHP)** in South Australia so we have to follow certain rules.



A CHP provides homes for people who:

- cannot find suitable housing through private rental; and
- who have low income.



A2P only provides housing for people living with disability.



The Australian Government also helps to cover some of the rental costs.

## Eligibility for Housing with A2P



To be eligible for an A2P home a person must:

- Be living with a permanent disability
- Live in South Australia
- Have a way to pay the rent
- Not earn too much money
- Not own a home that they could live in
- Not have too much money in the bank



For some A2P homes, eligibility also includes Specialist Disability Accommodation (**SDA**) funding.



SDA is money from the National Disability Insurance Scheme (NDIS); it helps A2P pay for housing with special features that mean people with disability can use the house more easily.



SDA money comes to A2P only if the tenant has SDA in their NDIS plan. This is why it might be essential for eligibility.



We will ask for documents which show that a person is eligible for housing with A2P.



Being eligible is just the first step. Other steps, and any documents needed, are detailed in our Easy Read Allocations.

## Staying Eligible



A2P tenants must stay eligible for housing with us. For most people this will happen automatically.

Losing eligibility does not happen very often,  
some examples are:



- A home you own has been altered and is now suitable for you to live in again.



- You receive enough money to buy your own home.



It is very rare for people to stop being eligible after they have moved in. If it does happen it is usually for a happy reason.



If something in your life changes and you think you may not be eligible for housing with us anymore, please tell us.



We will tell you if you are still allowed to live in an A2P home.



If you are not eligible anymore, we will give you time to move to your new home.



## Making a complaint



If you are not happy with something we have done you can make a complaint or appeal our decision.



You can lodge your complaint or appeal on our website or by contacting us directly. Our contact details are on the last page.

## Questions?



If you have any questions or would like more information please contact us:

- phone – 08 8274 6300
- email – [info@access2place.com.au](mailto:info@access2place.com.au)
- web – <https://access2place.com.au/>
- visit or write – 20 Greenhill Road,  
Wayville SA 5034